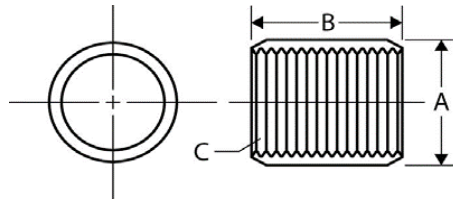




Full Coupling  
**Standard Merchant**  
 Galvanized  
 Inches / Pounds



Part #	Nominal Pipe Size	A Coupling OD	B Coupling Length	C Threads per Inch	Approx. Weight per 100 pieces (in Lbs.)
KFCG18	1/8	0.563	0.750	27	3
KFCG14	1/4	0.719	1.125	18	7
KFCG38	3/8	0.875	1.125	18	9
KFCG12	1/2	1.063	1.500	14	17
KFCG34	3/4	1.313	1.563	14	28
KFCG1	1	1.576	1.938	11-1/2	40
KFCG114	1 1/4	1.900	2.000	11-1/2	48
KFCG112	1 1/2	2.200	2.000	11-1/2	67
KFCG2	2	2.750	2.063	11-1/2	105
KFCG212	2 1/2	3.250	3.063	8	209
KFCG3	3	4.000	3.188	8	335
KFCG312	3 1/2	4.625	3.313	8	482
KFCG4	4	5.000	3.438	8	461
KFCG5	5	6.296	3.688	8	852
KFCG6	6	7.390	3.938	8	1,127

**\*Merchant Steel Couplings meet the following specifications: ASTM: A865 ANSI: B1.20.1**

**\*ASTM specifications require standard Merchant Couplings 1/8" – 2" to be Straight Tapped and 2-1/2 - 6" to be Taper Tapped.**

**\*Galvanization meet the following specifications: ASTM: B633**